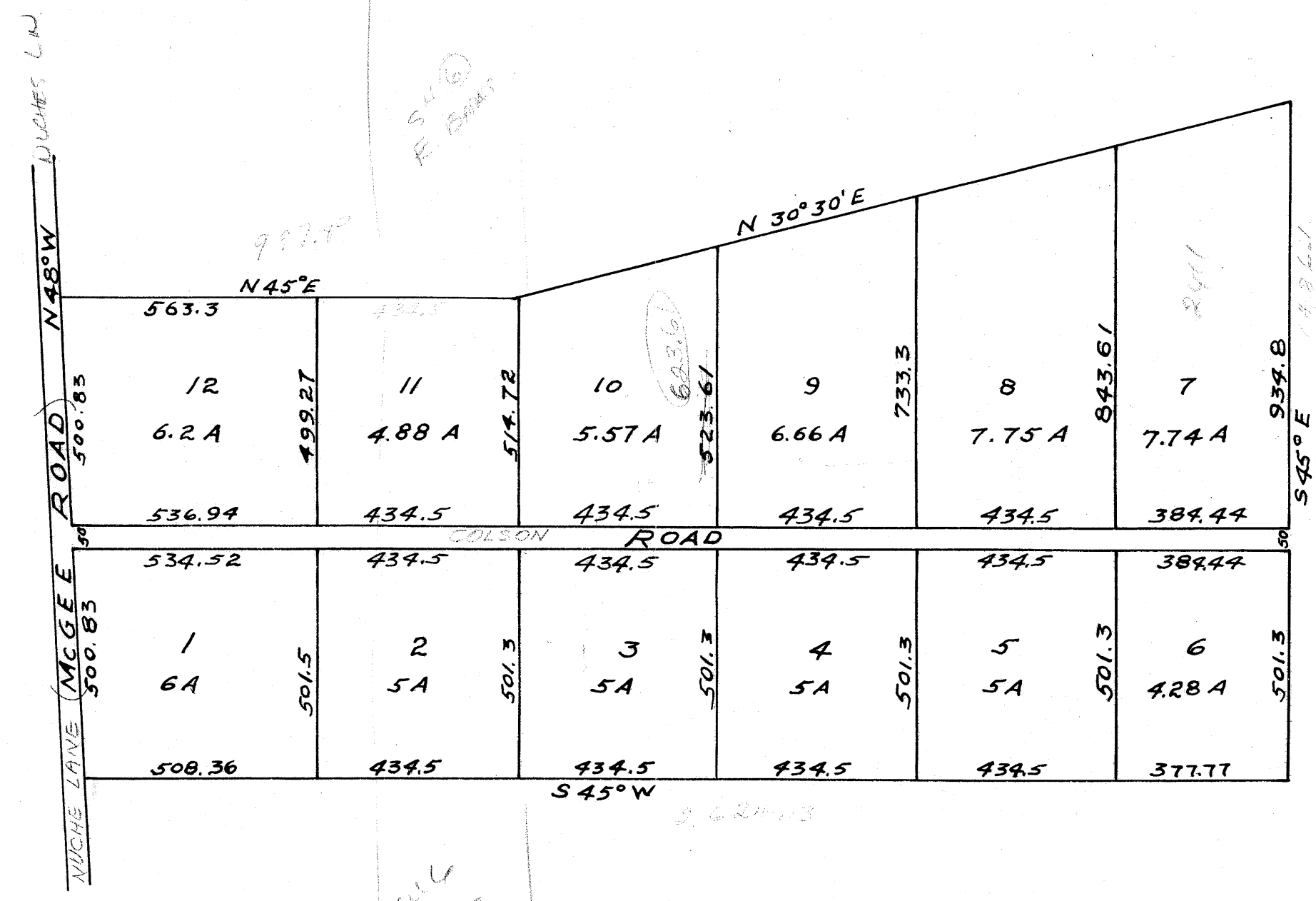
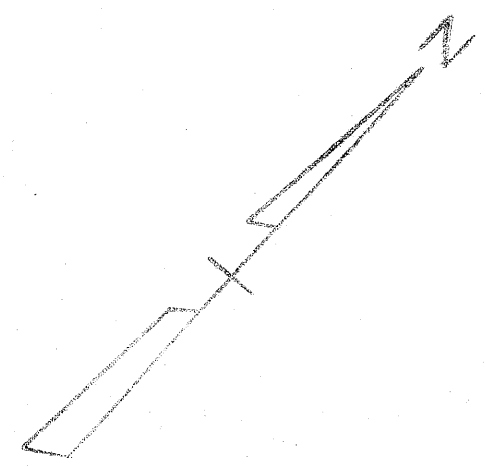


COULTER'S SUBDIVISION
 OF
 MCGEE TRACT
 D.R. 92 Pg. 421
 Scale: 1" = 300'
 Dec., 1936



CLARK LANE



Note: This subdivision is North of Hwy. #21
 East towards Madisonville.

on low base
 11/6/36

S 45° W
 501.3

501.3
 501.3
 974.6
 1486

see
 90B-4
 90B-1

246-398